



LONG ISLAND
Health
COLLABORATIVE

connecting you to better health

2025 CHNA/CHA Work Group

Monthly Meeting – May 21, 2025

Agenda

- Introductions & Housekeeping
- LIHC resources to come in June
 - CHNA/CHA Companion Report
 - Workplan with LIHC activities
- Discussion: 2026-2027 Interventions

Welcome & Introductions

Thank you for joining us!

Please share your name, role,
and organization with the group.








Housekeeping

- All meeting materials on LIHC website:
<https://www.lihealthcollab.org/member-resources/meeting-info/2025-chnacha-work-group>
- Work group meets on the second Wednesday of every month at 2 PM

Housekeeping

- Reminder: our new regional Prevention Agenda priorities are:
 - Nutrition Security;
 - Tobacco/ E-cigarette Use; and
 - Preventive Services for Chronic Disease Prevention and Control

Domain	Priorities		
 Economic Stability	Economic Wellbeing <ul style="list-style-type: none">• Poverty• Unemployment• Nutrition Security• Housing Stability and Affordability		
 Social and Community Context	Mental Wellbeing and Substance Use <ul style="list-style-type: none">• Anxiety and Stress• Suicide• Depression• Primary Prevention, Substance Misuse, and Overdose Prevention• Tobacco/ E-cigarette Use• Alcohol Use• Adverse Childhood Experiences• Healthy Eating		
 Neighborhood and Built Environment	Safe and Healthy Communities <ul style="list-style-type: none">• Opportunities For Active Transportation and Physical Activity• Access to Community Services and Support• Injuries and Violence		
 Health Care Access and Quality	<table><tr><td>Health Insurance Coverage and Access to Care<ul style="list-style-type: none">• Access to and Use of Prenatal Care• Prevention of Infant and Maternal Mortality• Preventive Services for Chronic Disease Prevention and Control• Oral Health Care</td><td>Healthy Children<ul style="list-style-type: none">• Preventive Services<ul style="list-style-type: none">◦ Immunization◦ Hearing screening and follow up◦ Lead screening• Early Intervention• Childhood Behavioral Health</td></tr></table>	Health Insurance Coverage and Access to Care <ul style="list-style-type: none">• Access to and Use of Prenatal Care• Prevention of Infant and Maternal Mortality• Preventive Services for Chronic Disease Prevention and Control• Oral Health Care	Healthy Children <ul style="list-style-type: none">• Preventive Services<ul style="list-style-type: none">◦ Immunization◦ Hearing screening and follow up◦ Lead screening• Early Intervention• Childhood Behavioral Health
Health Insurance Coverage and Access to Care <ul style="list-style-type: none">• Access to and Use of Prenatal Care• Prevention of Infant and Maternal Mortality• Preventive Services for Chronic Disease Prevention and Control• Oral Health Care	Healthy Children <ul style="list-style-type: none">• Preventive Services<ul style="list-style-type: none">◦ Immunization◦ Hearing screening and follow up◦ Lead screening• Early Intervention• Childhood Behavioral Health		
 Education Access and Quality	PreK-12 Student Success And Educational Attainment <ul style="list-style-type: none">• Health and Wellness Promoting Schools• Opportunities for Continued Education		

Timeline for CHAs/CHIPs/CSPs Submission for the 2025-2030 Prevention Agenda *has not changed*

Table 2. Timeline for CHAs/CHIPs/CSPs Submission for the 2025-2030 Prevention Agenda.

Year #	Time	LHDs	Hospitals
Y1	Dec 2025- June 2026	<ul style="list-style-type: none"> • Submit the CHA by December 2025. • Submit the CHIP either: <ul style="list-style-type: none"> ○ At the same time as the CHA by December 2025; OR ○ Following the CHA submission, no later than June 2026. 	<ul style="list-style-type: none"> • Submit the 2025-2027 CHA/CSP by December 2025.
Y2	Dec 2026	<ul style="list-style-type: none"> • Submit CHIP progress report by December 2026. 	<ul style="list-style-type: none"> • Submit CSP progress report by December 2026.
Y3	Dec 2027	<ul style="list-style-type: none"> • Submit CHIP progress report by December 2027. 	<ul style="list-style-type: none"> • Submit CSP progress report by December 2027.
Y4	Dec 2028	<ul style="list-style-type: none"> • Submit the mid-cycle CHA update to assist hospitals with their IRS-required CSP, if applicable • Submit CHIP progress report by December 2028. 	<ul style="list-style-type: none"> • Submit the 2028-2030 CHA/CSP by December 2028
Y5	Dec 2029	<ul style="list-style-type: none"> • Submit CHIP progress report by December 2029. 	<ul style="list-style-type: none"> • Submit CSP progress report by December 2029.
Y6	Dec 2030 End of Cycle	<ul style="list-style-type: none"> • Submit CHIP progress report by December 20230. 	<ul style="list-style-type: none"> • Submit CSP progress report by December 20230.

2025-2030 PA Updates

- [Prevention Agenda 2025-2030](#)
- Nothing new to report at this time
- New NYS Workplan Template (Excel) available for download on [NYSDOH website](#)
- No interventions listed yet

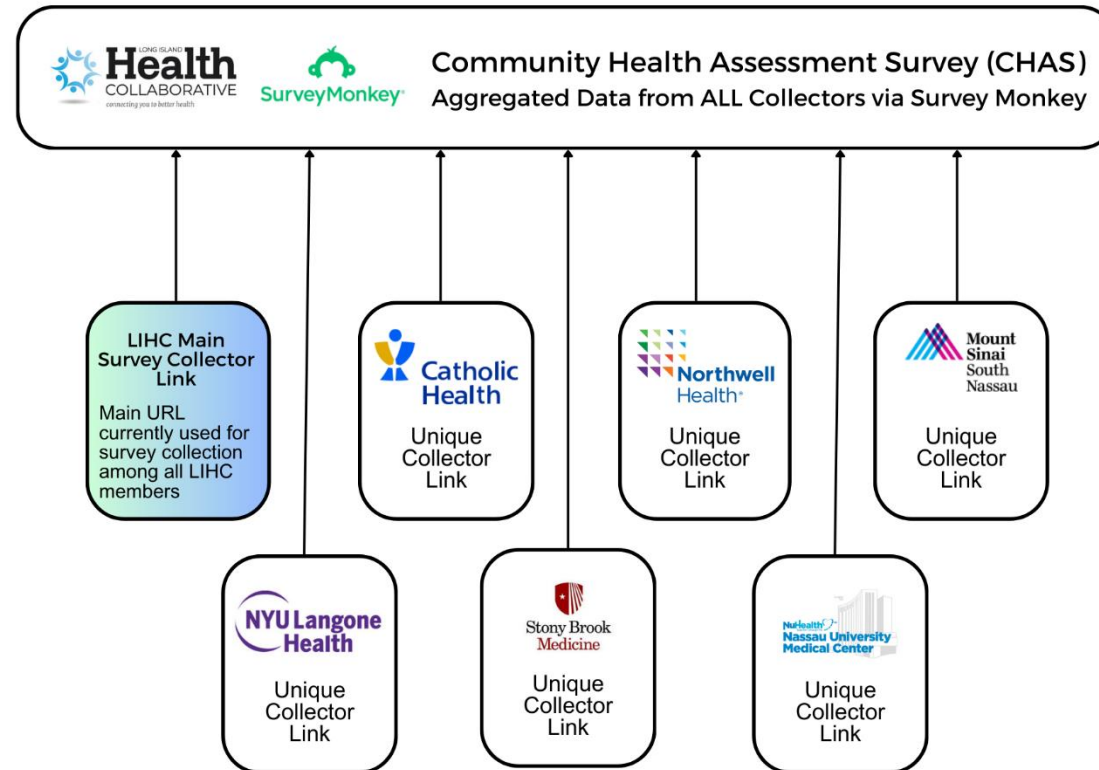
LIHC Resources to Come in June

- All for you to use or not use at your discretion
- CHNA/CHA Companion Report
 - All of LIHC's primary data and methodology
 - Methodology of regional priority selection
 - Peer-reviewed sources to support regional PA priorities
 - Socio-demographic description of counties using Census Data
- Excel Workplan with LIHC Activities
 - 2025 activities to date: Walk with a Doc (CD survey data) / Walk Safe with a Doc (traffic safety survey data) measures, Live Better campaign metrics, promotion of Core Cluster final products
 - Planned 2026-2027 activities

Discussion: 2026-2027 LIHC Activities

- Should we continue with our current interventions?
- Ideas about alternatives? Let's brainstorm

Ongoing CHAS Collection



*Proposing unique collector links for each NSHC member
Using health systems for example purposes, but collector links can be more granular (per facility, etc.)
All unique collector links feed into the same aggregate dataset housed in Survey Monkey*

Next Steps

- This is our group's last official meeting
- CHNA/CHA companion report and workplan to come late June
- Ad hoc meetings as needed
- **We're always available via phone and/or email!**

Discussion, Questions, etc.

- Questions, comments, concerns?
- Adjournment